

Dharma Products



D H A R M A **AppLink**TM
5250

Dharma AppLink 5250

Dharma AppLink 5250 is a member of Dharma's AppLink product family. These products allow e-business applications to access information from existing packaged or custom legacy applications and leverage the business rules embedded within those applications.

Dharma AppLink 5250 provides a user-configurable logical view of AS/400 based applications. When used in conjunction with Dharma Integrator, Legacy or Relational Links, an application developer can work with a unified view of all the pertinent information in their environment. This provides unparalleled flexibility and utility for new e-business initiatives. The product set provides an excellent base for fast changing e-business environments because views created are easily updated, expanded or modified.

Leveraging Investments in Legacy Technology

Creating new e-business solutions for established companies involves unifying existing business rules and information from many parts of the organization. The sources for these rules and information are the existing packaged, custom or legacy applications used to run companies.

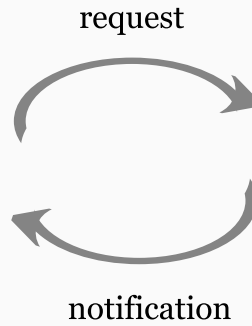
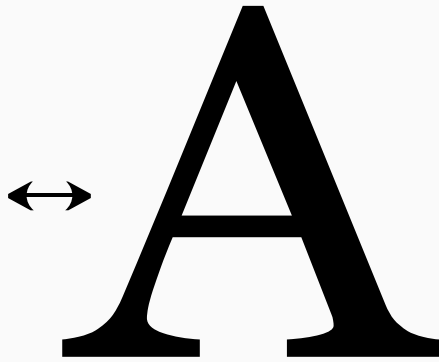
Traditional methods of integrating applications require coding or interfacing at the applications unique API level. Since no two applications have the same API, specific programming expertise is required to accomplish the desired integration. As the number of applications to be integrated increases, so does the learning curve for application developers and the complexity of the integration task.

Dharma AppLink 5250 provides easy to use access to existing applications. The product is ready-to-run out of the box, eliminating the need for custom coding or specialized software package expertise to integrate

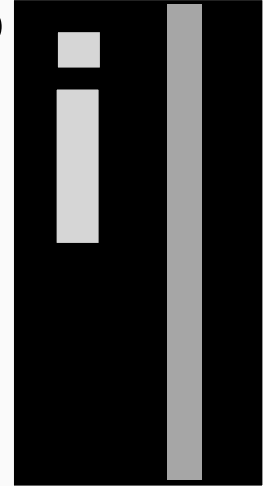
Highlights

- New e-business initiatives can be deployed at Internet speeds
- Simplifies the integration of packaged and custom legacy applications
- New applications leverage business rules and information in existing applications
- No specialized application API expertise required
- Use point-and-click tools to generate integration code
- No programming or changes required for existing applications
- Works with Dharma Integrator to join information from multiple sources

legacy applications with e-business solutions. Because Dharma AppLink 5250 uses industry standard interfaces, business information works seamlessly with Web development tools and application servers. Simply access and update through existing business transactions, leveraging the company's investment in the business rules embedded within their current applications. This reduces complexity for the developers, and allows for Internet speed deployment for e-business initiatives.



AS/400



D H A R M A AppLink™
5250

Dharma AppLink 5250 receives requests from Dharma Integrator or directly from an e-business Application and determines the information sources and transactions required to fulfill the request. At times, a number of transactions could be used to fulfill a particular request. Dharma AppLink uses its extensive optimization techniques to choose those business transactions that best manage network traffic, application server load and application transaction processing.

Once the business transactions execute, the resultant information is rationalized. Any data type transformation, sorting, or filtering required on the data to satisfy the transaction request is done at this time.

The resultant information returns to Dharma Integrator or the e-business application in a standardized format. The e-business developer has no need to understand the underlying applications or database systems.

Additional Key Features

Easy to use Graphical Interface - Dharma AppLink 5250 provides Administrators with an easy to use graphical interface for identifying and managing the business transactions. No coding or detailed understanding of the underlying technology is required. After creating a logical view of the required transactions, e-business Developers use the graphical interfaces in any web development tool to gain access to the application information.

Supports introspection of parameters - Dharma AppLink 5250 automatically discovers the available parameters in a business transaction, their data type, status as required parameters and validity for input. The transaction configuration tool makes it easy to identify the parameters of interest and maps them to your logical view of the information.

Unobtrusive access - Since Dharma AppLink 5250 simulates a users input via keyboard and screen, applications can be completely integrated to Dharma AppLink 5250's logical view without modification to the AS/400 application or environment.

Information Transformation - Dharma AppLink 5250 allows you to transform data from your application to alternate data types in your logical view to meet the needs of your e-business application. Specifying data transformation rules at this level allows execution simply and consistently across all your e-business applications.

Formatted for your e-Business Application - Dharma AppLink 5250 allows you to specify how to present information to your e-business application. Sort order, filters, and date and time functions may be specified on the returned information.

See our Dharma Integrator product data sheet for more information on integrating all your existing data and information resources.

Technical Specifications

Platforms: The Dharma AppLink server runs on Windows.
Client access is available through Windows 95/98/NT/2000/XP, Solaris, Linux.